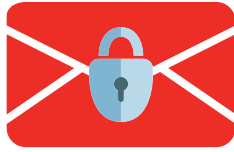




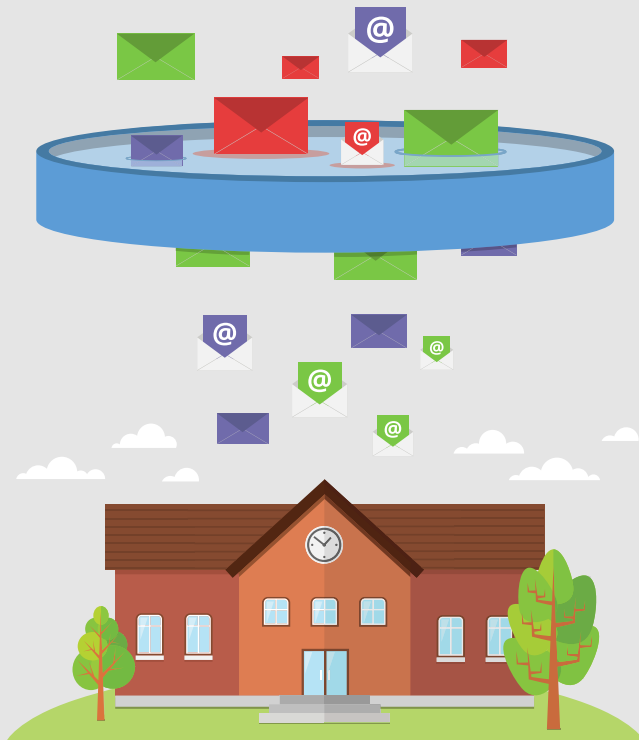
**ATOMWIDE**  
MANAGED SERVICES

Part of the AdEPT Group



Mail**Protect**

Dynamic, effective email filtering



[mailprotect.atomwide.com](https://mailprotect.atomwide.com)

01689 814700 | [info@atomwide.com](mailto:info@atomwide.com)

## Why email filtering?

---

A robust email filtering service is a crucial safeguarding tool. It not only helps to protect users from harmful content, but also helps to ensure the continuous safe and secure running of a school's network.

MailProtect harnesses the power of four market-leading technologies to offer round-the-clock protection from email-borne viruses, malware and other cyber-nasties, as well as filtering general spam and unwanted bulk mail.



With MailProtect, schools benefit from a service that's designed to give them a high degree of control over their email filtering configuration, and a service partner experienced in enterprise-scale email delivery and security. Atomwide have been developing and implementing designed-for-education products and services for 30 years.

Each day

**MailProtect** **SCANS** OVER **2 MILLION** emails  
for harmful content

---

“ We faced the daunting task of changing email security providers after years of having setup bespoke rules and customisations on our previous product. MailProtect was the chosen solution and the whole migration process was smooth, trouble free and expertly managed by Atomwide who skilfully implemented all customisations, and a few more. MailProtect has reduced the number of support calls as compared with our previous email security product whilst reducing the number of false-positives. ”

Head of Client Services, Serco

# Key features



Works in any organisation with any email provider



Round-the-clock protection from email-borne threats



Filtering both inbound and outbound mail



Reliably 'set and forget' helping to free up your technical staff



No complex, locally-installed software



No hardware to buy, manage or maintain



Protection evolves to respond to threats in real-time



Easy management via a dedicated website

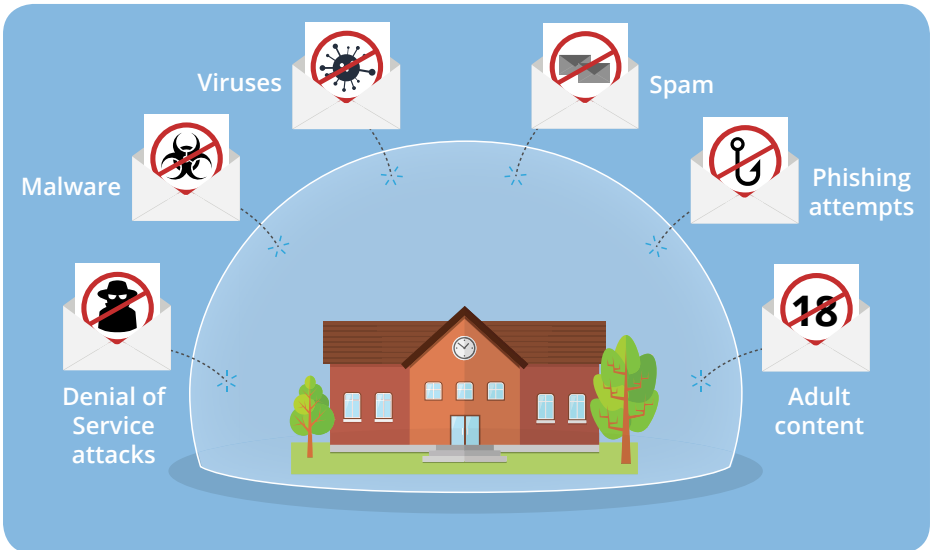


A customisable, flexible service giving users the control they require



Included support from the Atomwide Service Desk

## Protecting from



# Key benefits

---

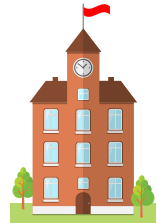
## Primary Schools

Where there aren't always on-site technical staff, MailProtect acts as a 'set and forget' service offering constant background protection without the need for specialist IT knowledge. Should schools require any assistance the Atomwide Service Desk is available to help.



## Secondary Schools

Where on-site admins may wish to engage with their filtering solution, nominated staff have access to a range of information and can perform various functions making sure MailProtect is working the right way for their school.



## Multi-site Schools

Individual users working across a MAT who may have more than one email address will be able to manage their email preferences centrally and view reports across their accounts from the MailProtect website regardless of which school they are in.

Equally, administrators can configure MailProtect for the entire MAT wherever they have an internet connection.



## Higher Education

More control can be given to individuals who, at over 18 years of age, may require less stringent safeguarding controls. Users can preview and release quarantined messages themselves (providing it is safe to do so).

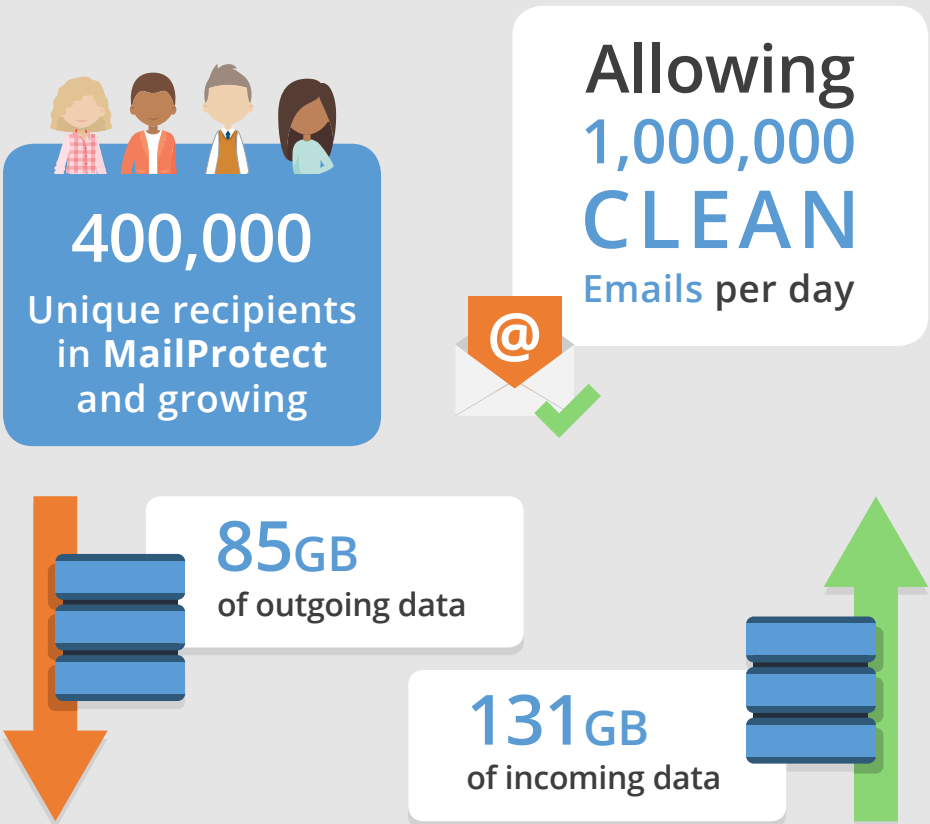


# Comprehensive protection

The technologies of CYREN, Sophos, Cloudmark and Spamhaus mean MailProtect is able to offer real-time protection on a global scale. MailProtect users can be protected from threats as soon as they are discovered, anywhere in the world, helping defend against new types of attack as soon as possible.

As well as providing safeguards against cyber-attacks, MailProtect also helps shield users from unwanted spam and bulk mail.

Users can receive daily spam digest emails informing them of any mail that has been caught in the filters, and are able to 'preview' or 'release' depending on the nature of the threat.



# Control

---

MailProtect is designed to give the school or institution a high degree of control over their filtering policies both at individual user and administrator level via the dedicated MailProtect management website.

## Individual users can:

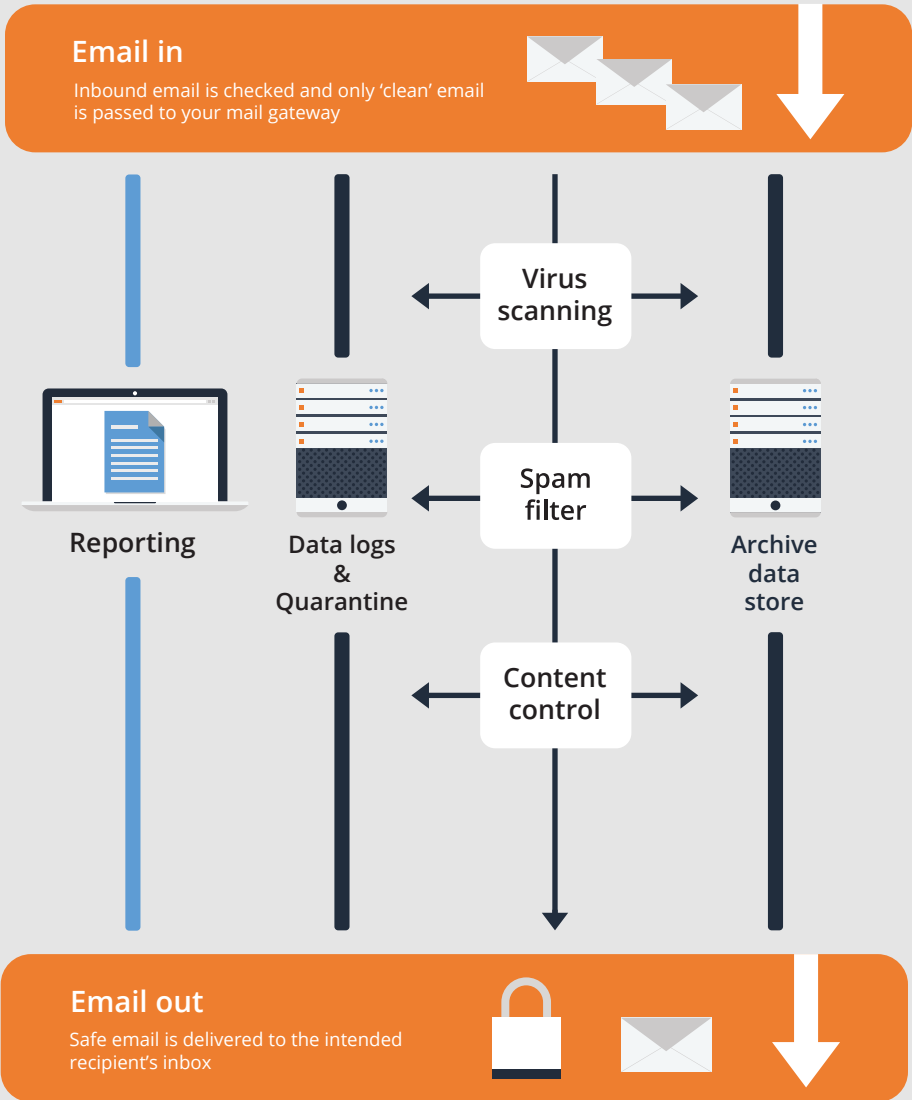
- ✓ Choose to receive a daily spam report
- ✓ Preview quarantined emails trapped in the spam filter
- ✓ Release legitimate emails if safe to do so

## System administrators can:

- ✓ View quarantined emails
- ✓ Preview message content and release only if appropriate
- ✓ Create custom rules for the handling of inbound mail for domains filtered by MailProtect
- ✓ Allow or block emails from individual addresses or even entire email domains, effectively maintaining bespoke 'allow' and 'reject' lists for your users
- ✓ View transit logs of all inbound and outbound messages
- ✓ View a log of quarantined messages that have been released
- ✓ Define email footers to enforce application of standard signatures to all messages passing through the system
- ✓ Gather statistics about system usage
- ✓ Access online help and UK-based Service Desk

\* Some features are dependent on USO being enabled

# High-level defence





- ✓ Round-the-clock protection from cyber-threats and spam
- ✓ Simple solution requiring no technical expertise
- ✓ Highly affordable with no hidden charges or hardware costs
- ✓ Benefits for any type of educational organisation
- ✓ A proven service in use by thousands of schools nationwide
- ✓ Included help and support from a UK-based Service Desk

And much more...

For more information and a quote please contact:

[mailprotect.atomwide.com](http://mailprotect.atomwide.com)

01689 814700 | [info@atomwide.com](mailto:info@atomwide.com)

 [@atomwide](https://twitter.com/atomwide)



© Atomwide 2017